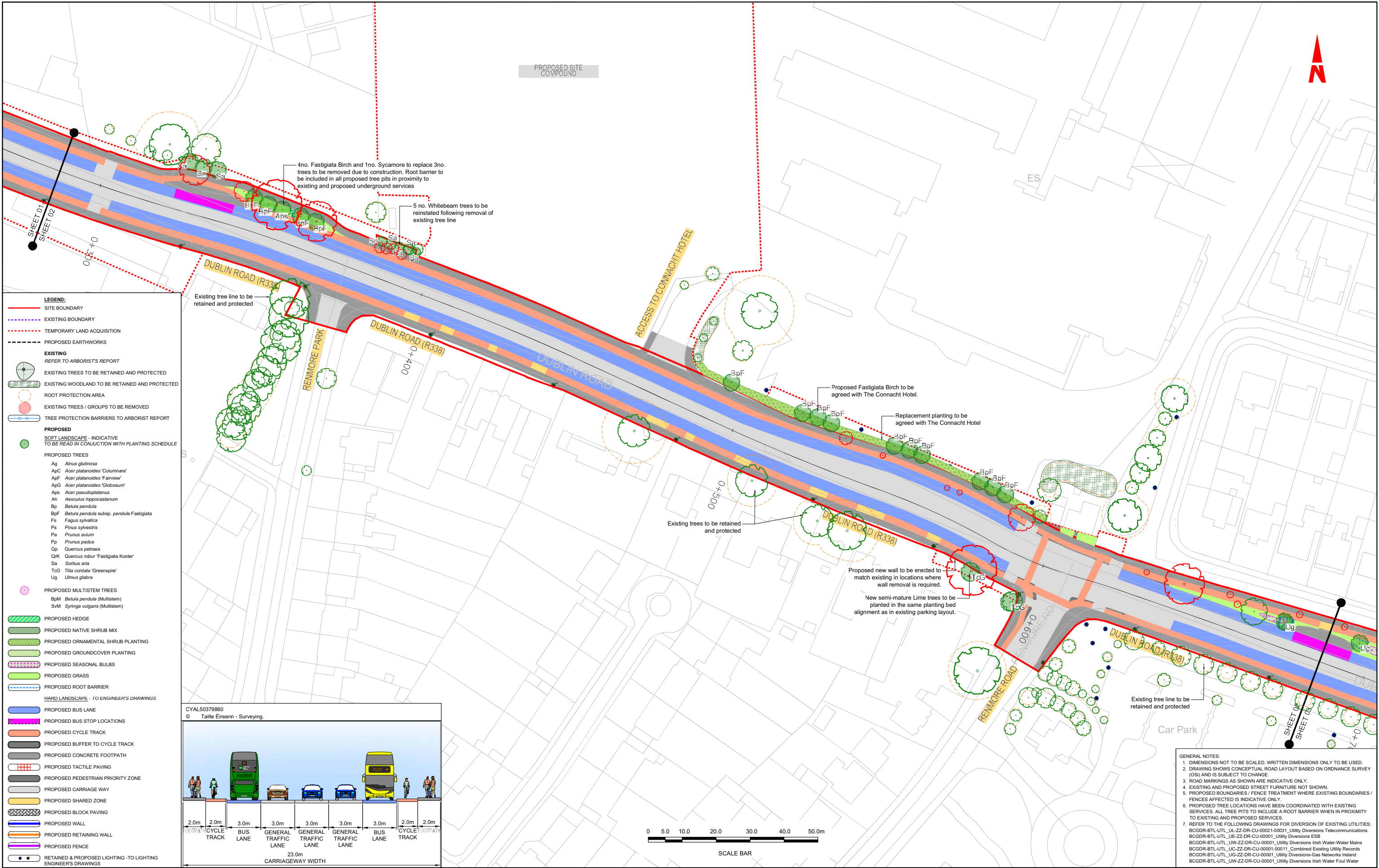
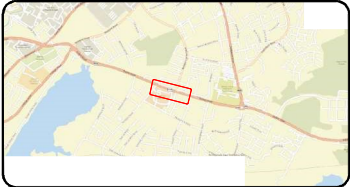
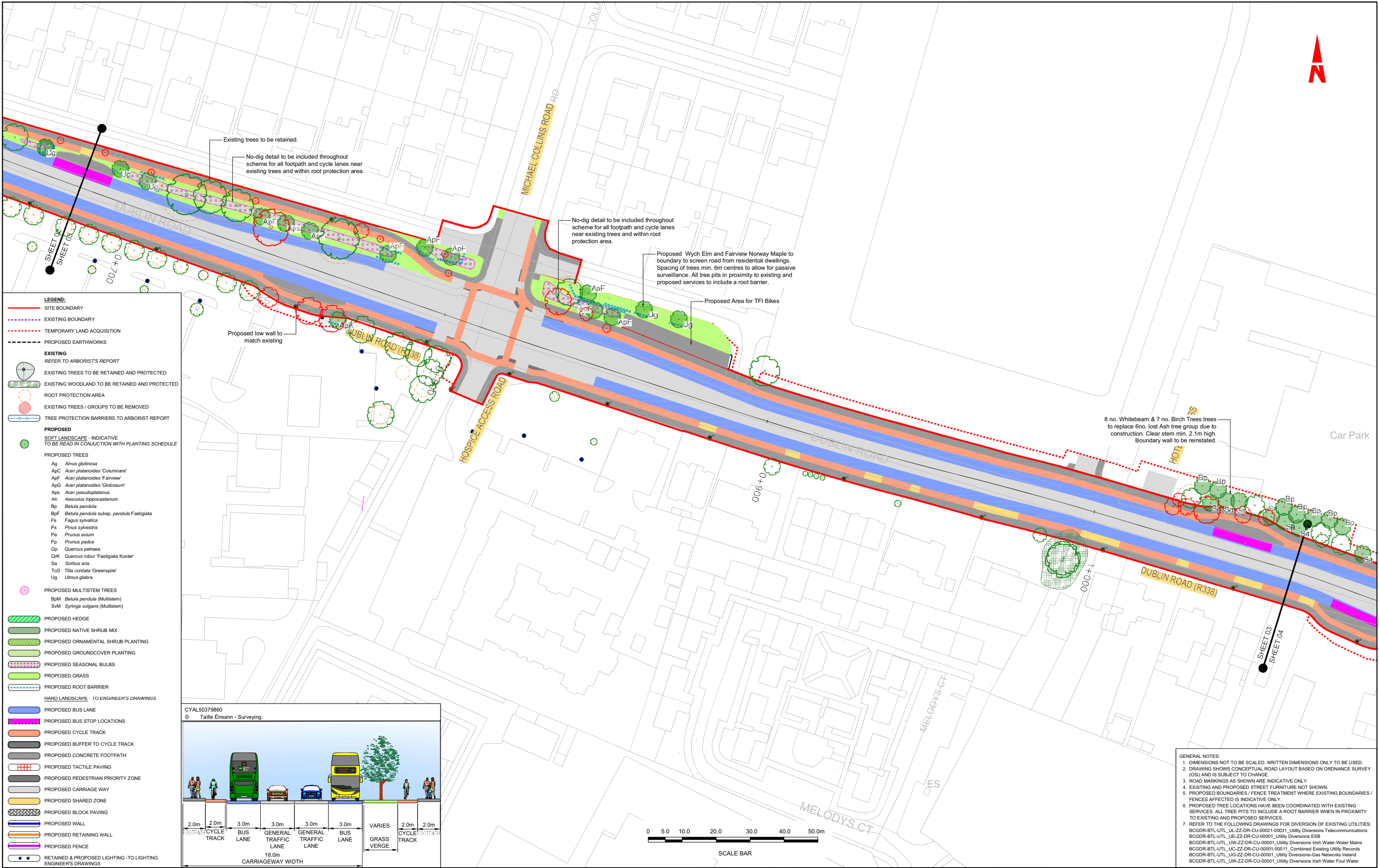


16.1

Landscape General Arrangement







Notes:

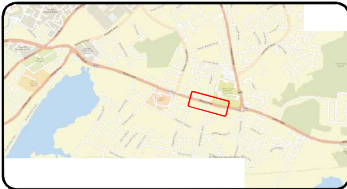
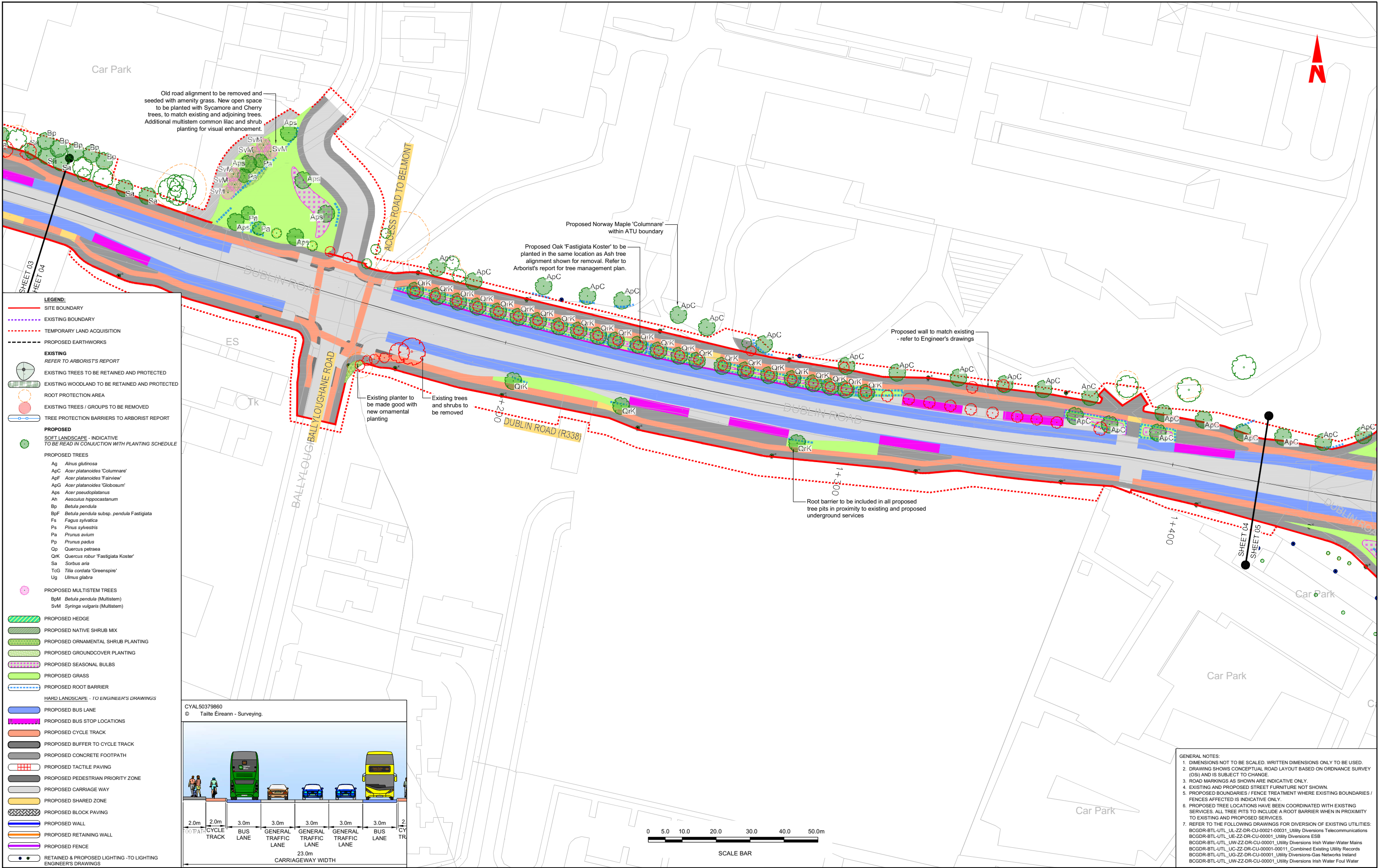
DO NOT SCALE: use figured dimensions only.

All levels are referred to Ordnance Survey Datum, Malin Head.

This drawing is the property of Barry Transportation. It is a confidential document and must not be copied, used, or its contents divulged without prior written consent. This document should not be relied on or used in circumstances other than those for which it was originally prepared. Barry Transportation accepts no responsibility for this document to any other party other than the party by whom it was commissioned.

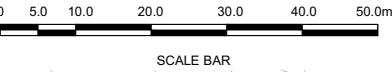
Rev.	Date	Drawn	Description	Chk'd	Appr.
001	06.12.24	MIT	ISSUE FOR PLANNING	CP	CP

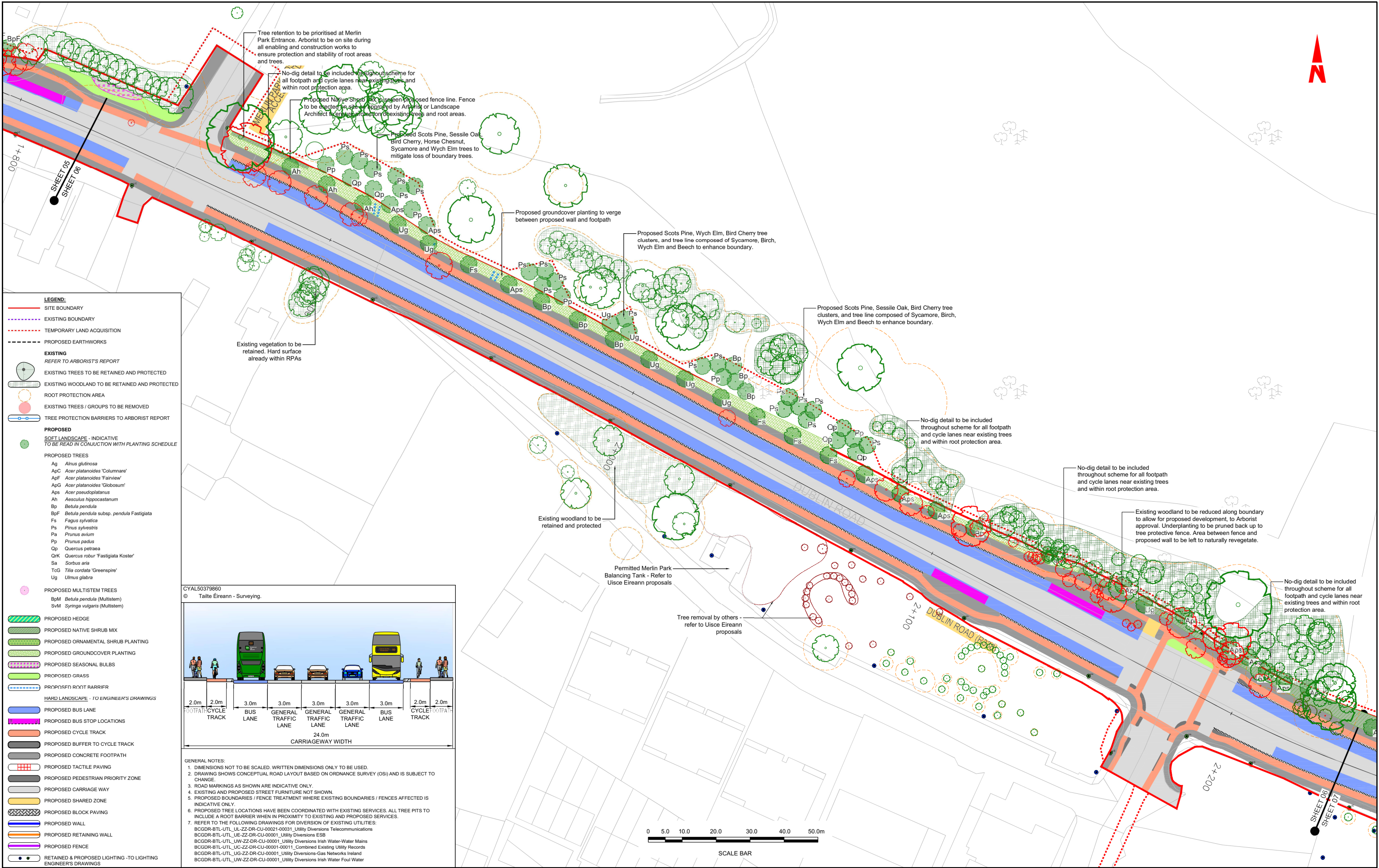
Project Title: BUSCONNECTS GALWAY: DUBLIN ROAD		Status: A1
Drawing Title: LANDSCAPE GENERAL ARRANGEMENT SHEET 03 OF 11		Rev: C01
Designed: MIT	Drawing No. BCGDR-BTL-ENV_LA-XX-DR-CE-00003	Rev: C01
Drawn: MIT	Scale at A1: 1:500	
Approved: CP	Date: OCT 2023	
Reviewed: CP		

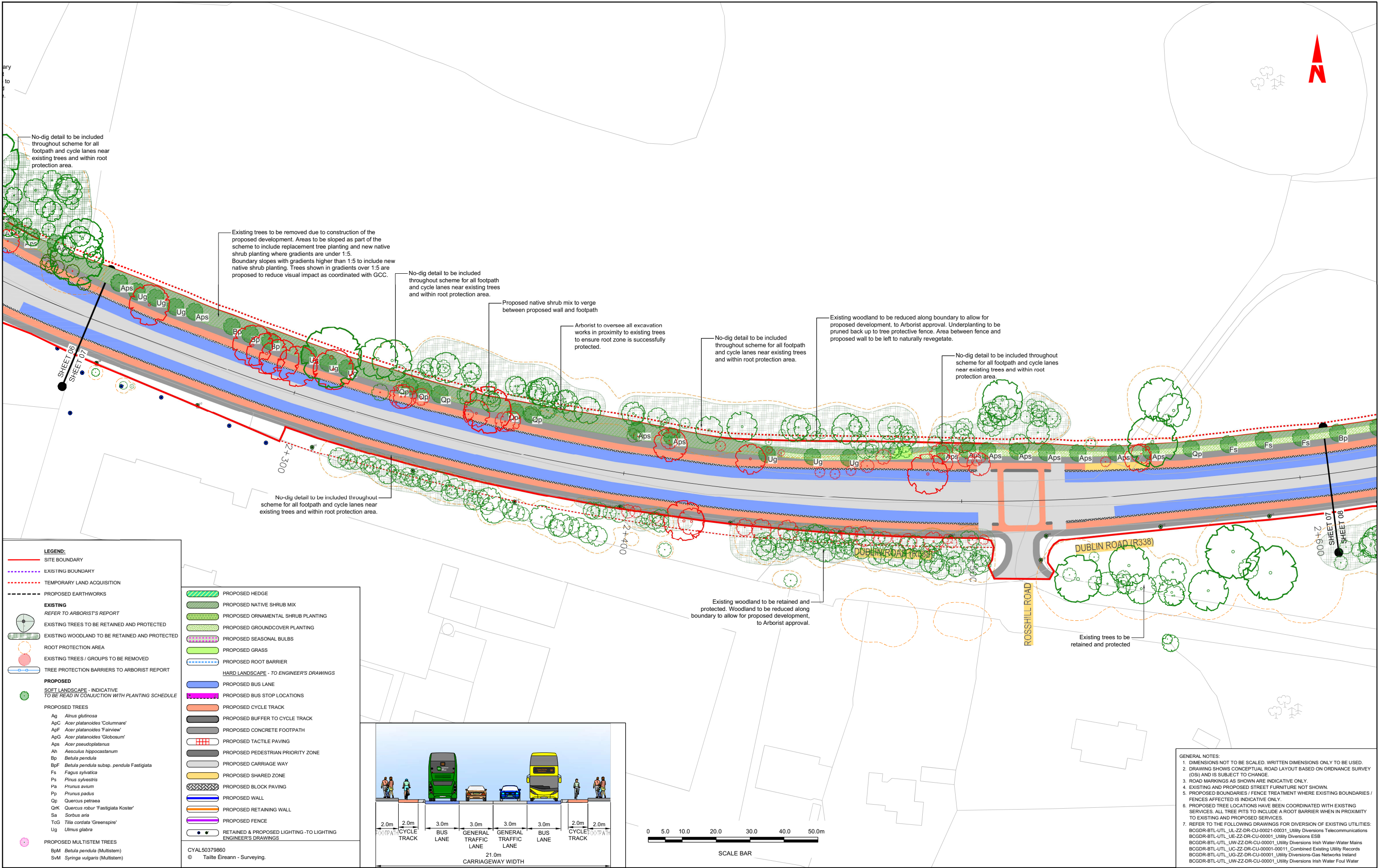


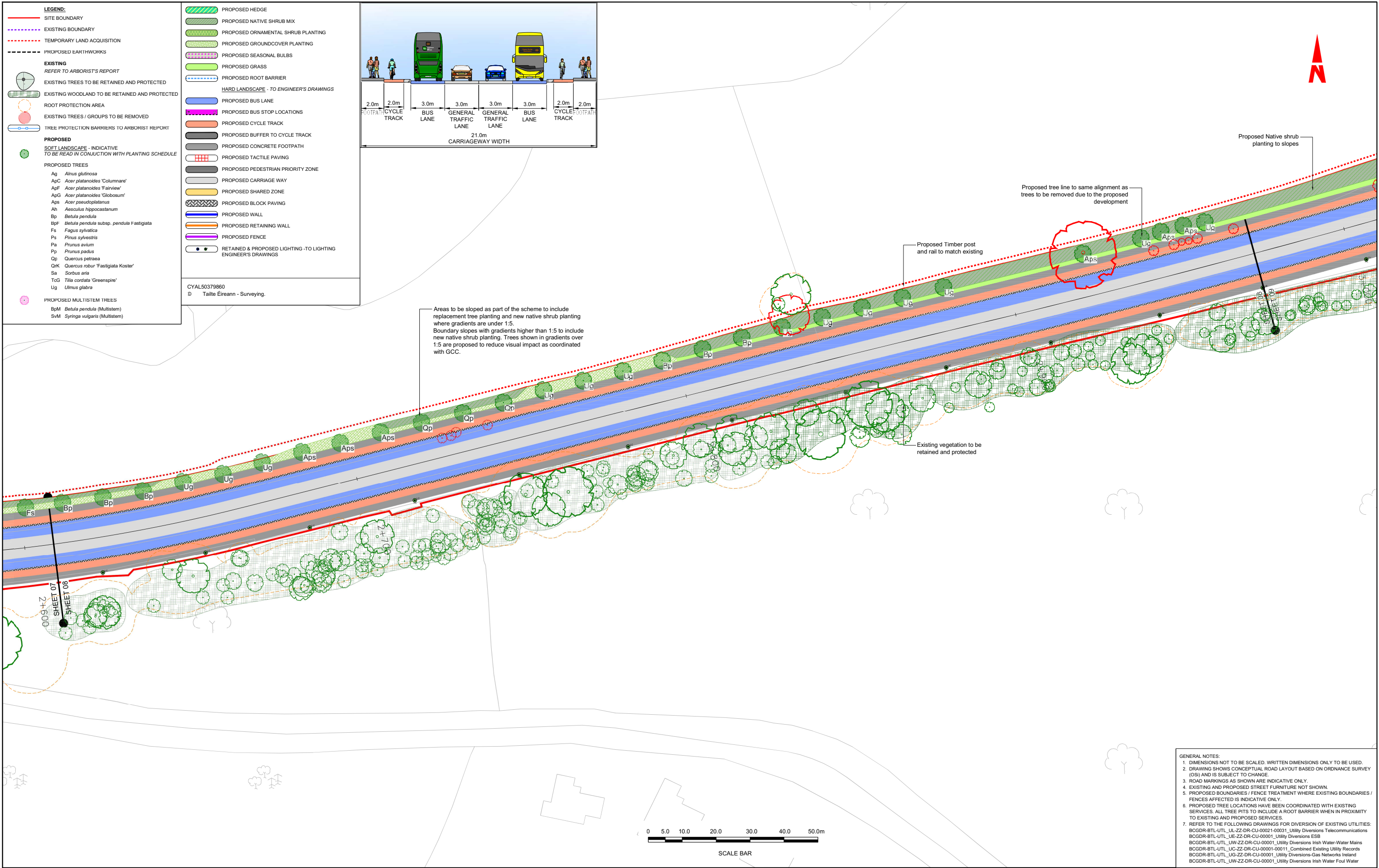
Rev.	Date	Drawn	Description	Chk'd	Appr.
001	06.12.24	MIT	ISSUE FOR PLANNING	CP	CP

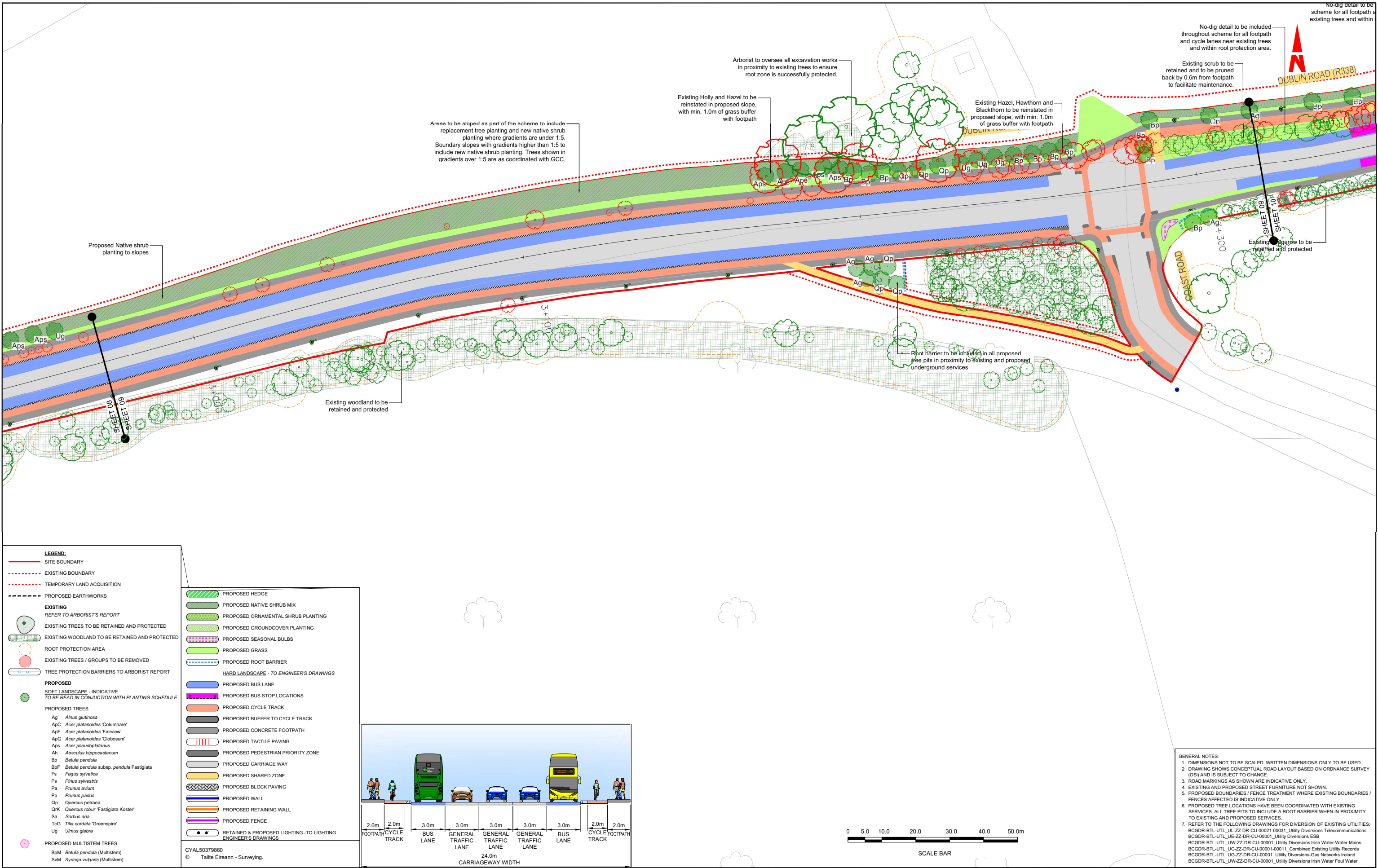
Project Title:	BUSCONNECTS GALWAY: DUBLIN ROAD	Status:	A1
Drawing Title:	LANDSCAPE GENERAL ARRANGEMENT SHEET 04 OF 11	Rev:	C01
Designed: MIT	Drawing No.		
Drawn: MIT	BCGDR-BTL-ENV_LA-XX-DR-CE-00004		
Approved: CP	Scale at A1: 1:500		
Reviewed: CP	Date: OCT 2023		

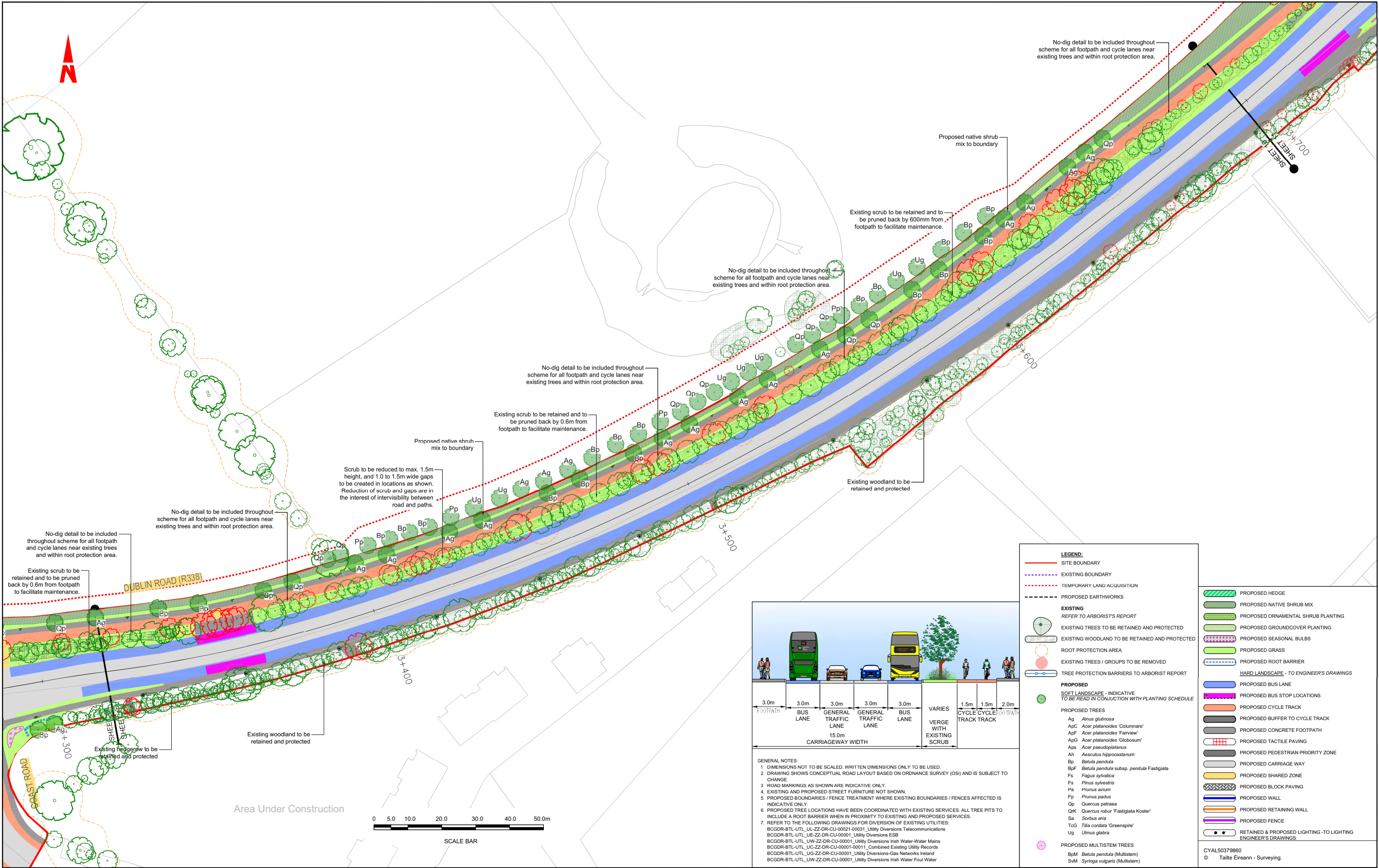


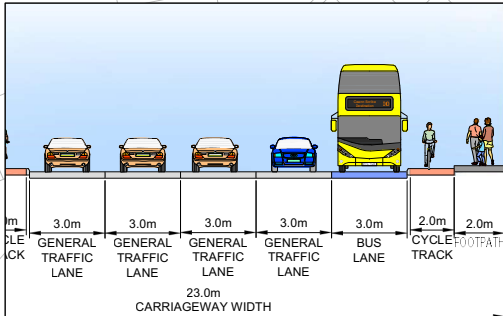
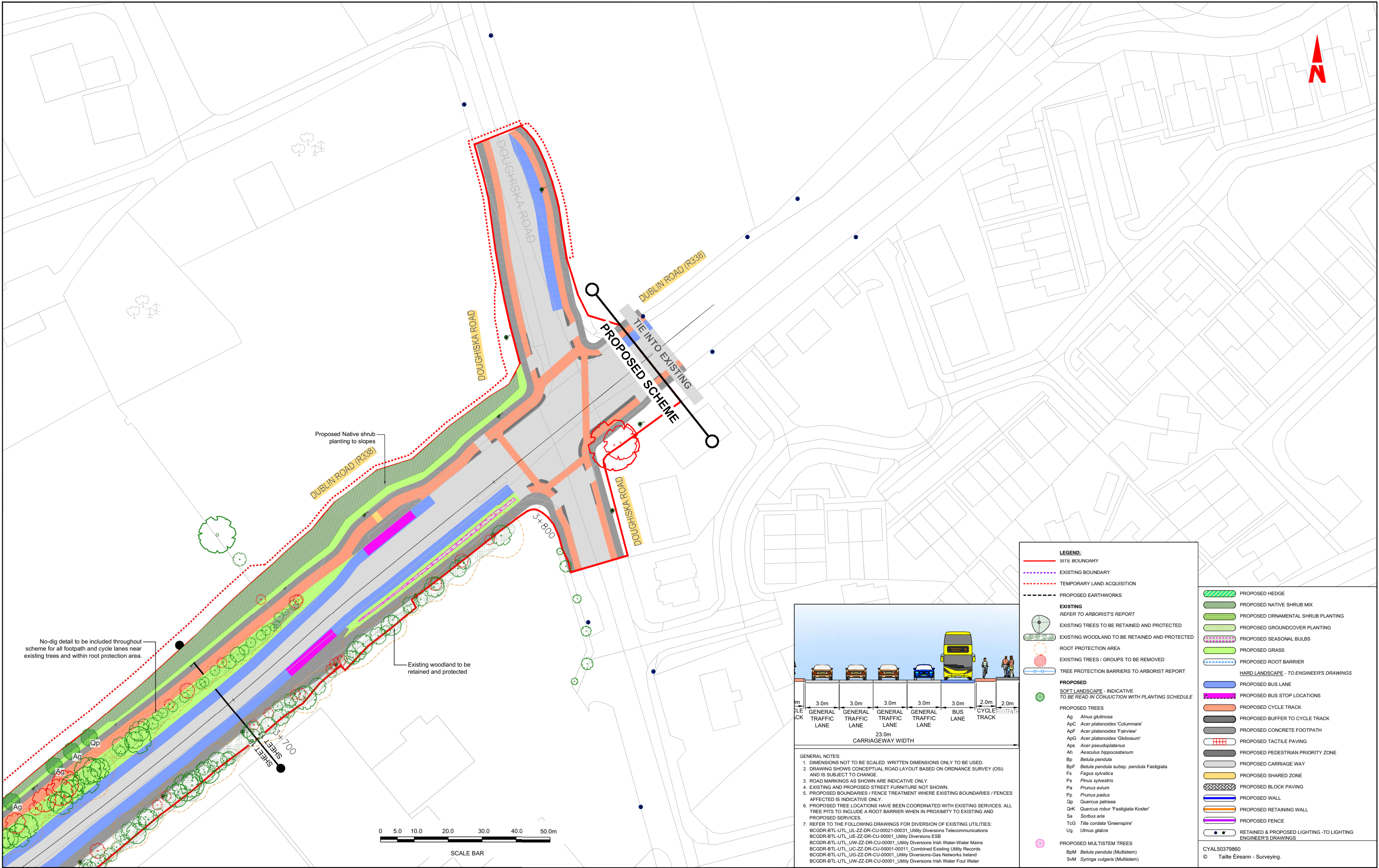












GENERAL NOTES:
1. DIMENSIONS NOT TO BE SCALED. WRITTEN DIMENSIONS ONLY TO BE USED.
2. DRAWING SHOWS CONCEPTUAL ROAD LAYOUT BASED ON ORDNANCE SURVEY (OS) AND IS SUBJECT TO CHANGE.
3. ROAD MARKINGS AS SHOWN ARE INDICATIVE ONLY.
4. EXISTING AND PROPOSED STREET FURNITURE NOT SHOWN.
5. PROPOSED BOUNDARIES / FENCE TREATMENT WHERE EXISTING BOUNDARIES / FENCES AFFECTED IS INDICATIVE ONLY.
6. PROPOSED TREE LOCATIONS HAVE BEEN COORDINATED WITH EXISTING SERVICES. ALL TREE PITS TO INCLUDE A ROOT BARRIER WHEN IN PROXIMITY TO EXISTING AND PROPOSED SERVICES.
7. REFER TO THE FOLLOWING DRAWINGS FOR DIVERSION OF EXISTING UTILITIES:
BCGDR-BTL-UTL_UL-ZZ-DR-CU-00021-00031_Utility Diversions Telecommunications
BCGDR-BTL-UTL_UL-ZZ-DR-CU-00001_Utility Diversions ESB
BCGDR-BTL-UTL_UL-ZZ-DR-CU-00001_Utility Diversions Irish Water-Water Mains
BCGDR-BTL-UTL_UL-ZZ-DR-CU-00001-00011_Combined Existing Utility Records
BCGDR-BTL-UTL_UL-ZZ-DR-CU-00001_Utility Diversions-Gas Networks Ireland
BCGDR-BTL-UTL_UL-ZZ-DR-CU-00001_Utility Diversions Irish Water Foul Water

- LEGEND:**
- SITE BOUNDARY
 - EXISTING BOUNDARY
 - TEMPORARY LAND ACQUISITION
 - PROPOSED EARTHWORKS
 - REFER TO ARBORIST'S REPORT
 - EXISTING TREES TO BE RETAINED AND PROTECTED
 - EXISTING WOODLAND TO BE RETAINED AND PROTECTED
 - ROOT PROTECTION AREA
 - EXISTING TREES / GROUPS TO BE REMOVED
 - TREE PROTECTION BARRIERS TO ARBORIST REPORT
 - PROPOSED
 - SOFT LANDSCAPE - INDICATIVE TO BE READ IN CONJUNCTION WITH PLANTING SCHEDULE
 - PROPOSED TREES
 - PROPOSED HEDGE
 - PROPOSED NATIVE SHRUB MIX
 - PROPOSED ORNAMENTAL SHRUB PLANTING
 - PROPOSED GROUND COVER PLANTING
 - PROPOSED SEASONAL BULBS
 - PROPOSED GRASS
 - PROPOSED ROOT BARRIER
 - HARD LANDSCAPE - TO ENGINEER'S DRAWINGS
 - PROPOSED BUS LANE
 - PROPOSED BUS STOP LOCATIONS
 - PROPOSED CYCLE TRACK
 - PROPOSED BUFFER TO CYCLE TRACK
 - PROPOSED CONCRETE FOOTPATH
 - PROPOSED TACTILE PAVING
 - PROPOSED PEDESTRIAN PRIORITY ZONE
 - PROPOSED CARRIAGE WAY
 - PROPOSED SHARED ZONE
 - PROPOSED BLOCK PAVING
 - PROPOSED WALL
 - PROPOSED RETAINING WALL
 - PROPOSED FENCE
 - RETAINED & PROPOSED LIGHTING - TO LIGHTING ENGINEER'S DRAWINGS

- CYAL50379860
© Tailte Éireann - Surveying.


Rev.	Date	Drawn	Description	Chk'd	Appr.
C01	06.12.24	MIT	ISSUE FOR PLANNING	CP	CP

Project Title: BUSCONNECTS GALWAY: DUBLIN ROAD		Status: A1
Drawing Title: LANDSCAPE GENERAL ARRANGEMENT SHEET 11 OF 11		Rev: C01
Designed: MIT	Drawing No. BCGDR-BTL-ENV_LA-XX-DR-CE-00011	Rev: C01
Drawn: MIT	Scale at A1: 1:500	
Approved: CP	Date: OCT 2023	
Reviewed: CP		



16.2

Planting Schedule

PLANTING SCHEDULE - INDICATIVE							
To be read in conjunction with Landscape Plans							
Proposed Trees							
Species	Girth / Form / Height	Location	Planting Density	Total No.	Comments	Establishment Maintenance Period 18 months	Management year 1.5 - 5
 <i>Alnus glutinosa</i>	18-20cm (Advanced Heavy Standard), /RB /min 4.5m in height	As shown	As shown	21	-Trees to be planted in positions shown on drawing. To be double staked	Defective (dead or dying) plants to be replaced after year 1. Monthly tasks: -Water weekly during dry weather -Weed removal at base of tree -Fertilise at base of tree	Every 3 years: -Trees to be pruned if necessary to be kept away from footpath and roads. - Pruning works to occur outside of bird nesting season. -Tree ties and staking to be adapted/ removed as required to ensure stability and healthy growth. - Fertilise as required.
<i>Acer platanoides</i> 'Columnare'	18-20cm (Advanced Heavy Standard), /RB /min 4.5m in height			27	-Where trees come in close proximity to underground services, a root barrier to be provided at 50cm offset from the service.		
<i>Acer platanoides</i> 'Fairview'	18-20cm (Advanced Heavy Standard), /RB /min 4.5m in height			9			
<i>Acer platanoides</i> 'Globosum'	16-18cm (Advanced Heavy Standard), /RB /min 4m in height			3	-Prunus species to be planted away from footpaths, or otherwise planted with a root barrier.		
<i>Acer pseudoplatanus</i>	20-25cm (Advanced Heavy Standard), /RB /min 5m in height			45			
<i>Aesculus hippocastanum</i>	20-25cm (Advanced Heavy Standard), /RB /min 5m in height			3	-Heavy standard and Standard trees to have a clear stem of min 2.1m height.		
<i>Betula pendula</i>	18-20cm (Advanced Heavy Standard), /RB /min 4.5m in height			64			
<i>Betula pendula</i> subsp. <i>pendula</i> Fastigiata	18-20cm (Advanced Heavy Standard), /RB /min 4.5m in height			30			
<i>Fagus sylvatica</i>	20-25cm (Advanced Heavy Standard), /RB /min 5m in height			7			
<i>Pinus sylvestris</i>	20-25cm (Advanced Heavy Standard), /RB or CG /min 5m in height			19			
<i>Prunus avium</i>	18-20cm (Advanced Heavy Standard), /RB /min 4.5m in height			10			
<i>Prunus padus</i>	18-20cm (Advanced Heavy Standard), /RB /min 4.5m in height			9			
<i>Quercus petraea</i>	18-20cm (Advanced Heavy Standard), /RB /min 4.5m in height			33			
<i>Quercus robur</i> 'Fastigiata Koster'	18-20cm (Advanced Heavy Standard), /RB /min 4.5m in height			26			
<i>Sorbus aria</i>	18-20cm (Advanced Heavy Standard), /RB /min 4.5m in height			19			
<i>Tilia cordata</i> 'Greenspire'	18-20cm (Advanced Heavy Standard), /RB /min 4.5m in height	2					
<i>Ulmus glabra</i>	18-20cm (Advanced Heavy Standard), /RB /min 4.5m in height	45					
Total				372			

Proposed Multi-stem Trees							
Species	Girth / Form / Height	Location	Planting Density	Total no.	Comments	Establishment Maintenance Period 18 months	Management year 1.5 -5
Betula pendula	2.5-3m height /RB /Multistem (3 no. stems)	As shown	As shown	28	-Trees to be planted in positions shown on drawing. To be double staked.	Defective (dead or dying) plants to be replaced after year 1. Monthly tasks: -Water weekly during dry weather -Weed removal at base of tree -Fertilise at base of tree	Every 3 years: -Trees to be pruned if necessary to be kept away from footpath and roads. -Pruning works to occur outside of bird nesting season. -Tree sex and staking to be adapted/ removed as required to ensure stability and healthy growth. -Fertilise as required.
Syringa vulgaris	2.0-2.5m height /RB /Multistem (3 no. stems)			8	-Where trees come in close proximity to underground services, a root barrier to be provided at 50cm offset from the service.		
				Total	36		

Hedge Planting									
	Species	Specification	% in mix	Density (no. /m)	Total length (m)	No.	Comments	Management year 1-5	Management year 5-10
							-Hedge to be planted in a single row.	Pruning can be carried out in late spring. Use mulch and a general fertiliser after hard pruning	Yearly. Prune to desired height. Pruning works to occur outside of bird nesting season.
	<i>Fagus sylvatica</i>	60-90cm/BR	100	3	30	90			Preference for min. height at 60cm, but preferred height at 90cm. Maintain a minimum width of 60cm

Proposed Native Shrub Mix								
Species	Specification	% in mix	Density (no. /m)	Total Area (sq.m)	No.	Comments	Management year 1-5	Management year 5-10
<i>Euonymus europaeus</i>	60-90cm/BR	3	3	5369	483	-To be planted in staggered groups of 2-3 of same species. -Species such as <i>Crataegus</i> and <i>Prunus</i> to be planted at the centre of the hedgerow. -Hedgerow to be pruned outside the bird nesting season.	Defective (dead or dying) plants to be replaced after year 1. Monthly tasks: -Water weekly during dry weather -Weed removal at base of whip/shrub -Fertilise at base of whip/shrub	Every year: - Prune to desired height: Preference for height to 2m -Maintain a minimum width of 80cm.
<i>Corylus avellana</i>	60-90cm/BR	15			2416			
<i>Crataegus monogyna</i>	60-90cm/BR	45			7248			
<i>Ilex aquifolium</i>	60-90cm/CG 2lit pot	13			2094			
<i>Lonicera periclymenum</i>	60-90cm/CG 2lit pot	4			844			
<i>Prunus spinosa</i>	60-90cm/BR	10			1611			
<i>Viburnum opulus</i>	60-90cm/BR	10			1611			
		Total			100			

Proposed Ornamental Shrub Planting								
Species	Specification	% in mix	Density (no./m2)	Total Area (m2)	No.	Comments	Establishment Maintenance Period 18 months	Management year 1.5 -5
<i>Achillea millefolium</i> 'Cerise Queen'	10cm pot	9	6	609	329	-To be planted in groups of 3-5 of same species	Note - Establishment Maintenance to be 18 months after end of Defects Liability Period. Defective (dead or dying) plants to be replaced at end of Establishment Maintenance Period. Monthly tasks during Establishment Maintenance Period: -Water weekly during dry weather -Weed removal at base of shrub or tree - Bark mulch to be applied to beds	Every year: If over crowding of shrub bed has occurred then alternate shrubs to be removed. Top up bark mulch after 3 years Calamagrostis to be deslashed in February, before the new growing season. Top up bark mulch after 3 years.
<i>Calamagrostis</i> x <i>acutiflora</i> 'Karl Foerster'	40-60cm shoot length/2L pot	14			512			
<i>Echinacea pallida</i>	10cm pot	9			329			
<i>Lavandula angustifolia</i> 'Hidcote'	20-30cm shoot length/2L pot	7			256			
<i>Philomis tuberosa</i> 'Amazone'	20-30cm shoot length/2L pot	4			148			
<i>Rosmarinus officinalis</i>	20-30cm shoot length/2L pot	7			256			
<i>Geranium macrorrhizum</i> 'Spessart'	10cm pot	6			219			
<i>Scabiosa columbiana</i>	10cm pot	9			329			
<i>Rudbeckia fulgida</i> 'Golgstrum'	10cm pot	8			292			
<i>Salvia nemorosa</i> 'Ostfriesland'	10cm pot	5			183			
<i>Sarcococca hookeriana</i> var. <i>humilis</i>	10cm pot	6			219			
<i>Stipa tenuissima</i> 'Pony Tails'	10cm pot	6			219			
<i>Symphotrichum</i> 'Little Carlow'	20-30cm shoot length/2L pot	6			219			
<i>Viburnum opulus</i>	20-30cm shoot length/2L pot	4			146			
Total		100			3654	- Proposed Shrub Planting for Connacht Hotel boundary to be agreed with landowner in advance. Area quantified in this section.		

Planting schedule to be read in conjunction with Landscape Plans, drawings no.:

• BCGDR-BTL-ENV_LA-XX-DR-CE-00001	• BCGDR-BTL-ENV_LA-XX-DR-CE-00007
• BCGDR-BTL-ENV_LA-XX-DR-CE-00002	• BCGDR-BTL-ENV_LA-XX-DR-CE-00008
• BCGDR-BTL-ENV_LA-XX-DR-CE-00003	• BCGDR-BTL-ENV_LA-XX-DR-CE-00009
• BCGDR-BTL-ENV_LA-XX-DR-CE-00004	• BCGDR-BTL-ENV_LA-XX-DR-CE-00010
• BCGDR-BTL-ENV_LA-XX-DR-CE-00005	• BCGDR-BTL-ENV_LA-XX-DR-CE-00011
• BCGDR-BTL-ENV_LA-XX-DR-CE-00006	

Proposed Groundcover Planting								
Species	Specification	% in mix	Density (no. /m2)	Total Area (m2)	No.	Comments	Establishment Maintenance Period 18 months	Management year 1-5
<i>Anemone hupehensis</i> var. <i>japonica</i> 'Prinz Heinrich'	20-30cm shoot length/2L pot	5	8	1734	694	-To be planted in groups of 3-5 of same species	Note - Establishment Maintenance to be 18 months after end of Defects Liability Period. Defective (dead or dying) plants to be replaced at end of Establishment Maintenance Period. Monthly tasks during Establishment Maintenance Period -Water weekly during dry weather -Weed removal at base of shrub or tree -Bark mulch to be applied to beds. Ensure bark mulch has a min. depth of 50mm -Do not cut the foliage of Tulbaghia violacea while it's still green. Wait until it is fully yellow.	Every year: Prune bark planting as deemed necessary (min. width of 80cm). If over crowding of shrub bed has occurred then alternate shrubs to be removed. Top up bark mulch after 3 years.
<i>Astrantia major</i> 'Claret'	20-30cm shoot length/2L pot	5			694			
<i>Carex elata</i> 'Aurea'	20-30cm shoot length/2L pot	7			971			
<i>Digitalis grandiflora</i>	10cm pot	5			694			
<i>Heuchera villosa</i> 'Palace Purple'	30-40cm shoot length/2L pot	3			416			
<i>Knautia arvensis</i>	10cm pot	5			694			
<i>Knautia macedonica</i>	10cm pot	5			694			
<i>Nepeta</i> x <i>faassenii</i> 'Walker's Low'	10cm pot	6			832			
<i>Perovskia atriplicifolia</i> 'Blue Spire'	30-40cm shoot length/2L pot	7			971			
<i>Rudbeckia fulgida</i> 'Goldstrum'	10cm pot	7			971			
<i>Salvia nemorosa</i> 'Caradonna'	20-30cm shoot length/2L pot	8			1110			
<i>Scabiosa columbaria</i>	10cm pot	5			694			
<i>Stachys byzantina</i>	20-30cm shoot length/2L pot	5			694			
<i>Tulbaghia violacea</i>	10cm pot/Standard size bulb/rhizome	5			694			
<i>Verbena bonariensis</i>	10cm pot	5			694			
<i>Viburnum davidii</i>	30-40cm shoot length/2L pot	5			694			
<i>Persicaria affinis</i> 'Superba'	30-40cm shoot length/2L pot	7	971					
<i>Vinca minor</i>	10cm pot	5	694					
	Total	100			13872			

Proposed Seasonal Bulbs								
Species	Height	% in mix	Density (no. /m2)	Total Area (m2)	No.	Comments	Establishment Maintenance Period 18 months	Management year 1.5 -5
<i>Galanthus nivalis</i>	Standard bulb size	5	15	1054	791	-Bulbs to be planted randomly at a depth equal to 2.5x their length and between the new plants.	Do not mow the areas that include bulbs. Only cut back when the foliage of bulbs has turned yellow. If foliage is cut while green, the bulbs will need to be replanted.	Do not cut bulb foliage while it is still green, but only when after it has turned fully yellow.
<i>Crocus chrysanthus</i> 'Romance'	Standard bulb size	10			1581			
<i>Crocus tommasinianus</i>	Standard bulb size	10			1581			
<i>Crocus pulchellus</i>	Standard bulb size	10			1581			
<i>Narcissus</i> 'Can Can Girl'	Standard bulb size	10			1581			
<i>Allium hollandicum</i> 'Purple Sensation'	Standard bulb size	5			791			
<i>Eranthis hyemalis</i>	Standard bulb size	10			1581			
<i>Eremurus robustus</i> 'Cleopatra'	Standard bulb size	10			1581			
<i>Muscari armeniacum</i>	Standard bulb size	5			791			
<i>Tulipa sprengeri</i>	Standard bulb size	5			791			
<i>Camassia leichtlinii</i> 'Cerulaea'	Standard bulb size	10			1581			
<i>Tulipa</i> 'Paradise Mix'	Standard bulb size	10			1581			
		Total: 100			11858			

Proposed Grass							
Grass Mix	Sowing Rate (g/m2)	% in mix	Total No. (kg)	Comments	Establishment Maintenance Period 18 months	Management year 5-10	
Flowering Lawn - Low Growing Meadow Mix- Wildflowers & Grass from connectingtonature.ie or similar approved	5	100	8348	31.74	<div>-Site preparation should aim for a totally weed free start</div> <div>-Top of edge/kerb foundations to be scrapped off to allow for a minimum 150mm of topsoil prior to seeding grass mix.</div>	<div>Establishment - protect from traffic until established</div> <div>Establishment cut to 10cm, in spring, cut again in Sept-Oct. Cuttings to be removed and composted.</div>	<div>Cut bi-weekly to 4-5cm. Spot sowing to bare patches.</div> <div>Cuttings to be removed and composted.</div>